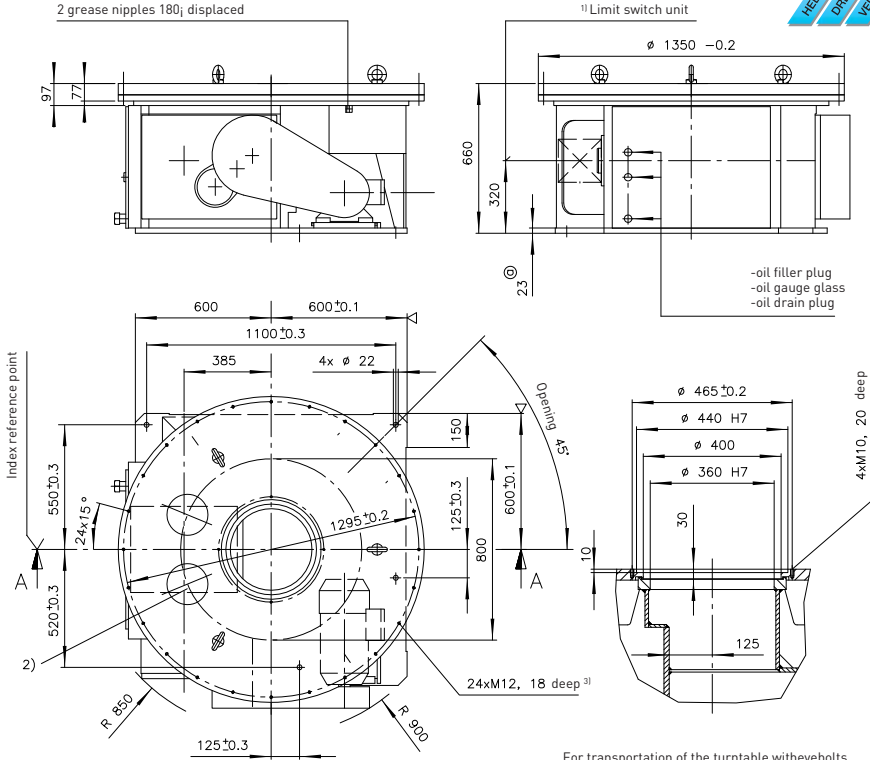


ED1350/A3680

Precision index drives for rotary motions



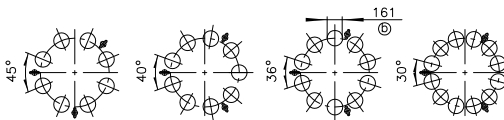
For transportation of the turntable with eyebolts, 3 tapped holes M24x40 deep have been arranged on $\varnothing 935$.

¹⁾ For the dimensions of limit switch units, accessories or special design, please ask for a separate drawing.

³⁾ Standard fixing hole pattern. Special hole pattern at extra price on request.

²⁾ Location of the cam followers at the index reference point
(Free areas must be provided accordingly in the tool plate)

4/8 Indexing steps 3/9 Indexing steps 5/10 Indexing steps 6/12 Indexing steps
8 cam followers 9 cam followers 10 cam followers 12 cam followers



Technical data

Static bearing capacity of table plate bearing
(theoretic factors of the bearing manufacturer)

$C_{OA} = 2106000 \text{ N}$

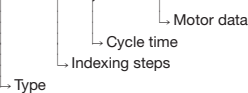
$C_{OR} = 991000 \text{ N}$

$C_{OM} = 602000 \text{ Nm}$

Permissible resulting tangential moment, due to process related forces incurred while the table plate is at standstill: $M_t = 16800 \text{ Nm}$

Order example:

ED1350 2 5,7 400 V - 50 Hz



Indexing steps

Standard indexing steps: 2,3,4,5,6,8,9,10,12
further indexing steps on request

Tool plate Accuracy

Mounting of tool plate see drwg.
order: ± 26 angular seconds

Total weight Motor Remark

High-precision performance upon request approx. 2000 kg (depending on size of motor)
C-flange motor to requirements
This type range permits the construction of special models with different technical data. In order to prepare a detailed offer, we would need exact technical information.